



Net (phospho Ser357) Polyclonal Antibody

Catalog No	YP-Ab-01394
Isotype	IgG
Reactivity	Human;Mouse;Monkey
Applications	WB;IHC;IF;ELISA
Gene Name	ELK3
Protein Name	ETS domain-containing protein Elk-3
Immunogen	The antiserum was produced against synthesized peptide derived from human Elk3 around the phosphorylation site of Ser357. AA range:323-372
Specificity	Phospho-Net (S357) Polyclonal Antibody detects endogenous levels of Net protein only when phosphorylated at S357.
Formulation	Liquid in PBS containing 50% glycerol, 0.5% BSA and 0.02% sodium azide.
Source	Polyclonal, Rabbit,IgG
Purification	The antibody was affinity-purified from rabbit antiserum by affinity-chromatography using epitope-specific immunogen.
Dilution	Western Blot: 1/500 - 1/2000. Immunohistochemistry: 1/100 - 1/300. Immunofluorescence: 1/200 - 1/1000. ELISA: 1/20000. Not yet tested in other applications.
Concentration	1 mg/ml
Purity	≥90%
Storage Stability	-20°C/1 year
Synonyms	ELK3; NET; SAP2; ETS domain-containing protein Elk-3; ETS-related protein ERP; ETS-related protein NET; Serum response factor accessory protein 2; SAP-2; SRF accessory protein 2
Observed Band	38kD
Cell Pathway	Nucleus.
Tissue Specificity	Brain,Epithelium,Placenta,
Function	function:May be a negative regulator of transcription, but can activate transcription when coexpressed with Ras, Src or Mos. Forms a ternary complex with the serum response factor and the ETS and SRF motifs of the Fos serum response element.,similarity:Belongs to the ETS family.,similarity:Contains 1 ETS DNA-binding domain.,subunit:Interacts with CTBP1.,
Background	This gene encodes a member of the ETS-domain transcription factor family and the ternary complex factor (TCF) subfamily. Proteins in this subfamily regulate transcription when recruited by serum response factor to bind to serum response elements. This protein is activated by signal-induced phosphorylation; studies in rodents suggest that it is a transcriptional inhibitor in the absence of Ras, but activates transcription when Ras is present. Alternate splicing results in multiple



transcript variants. [provided by RefSeq, Jan 2015],

matters needing attention

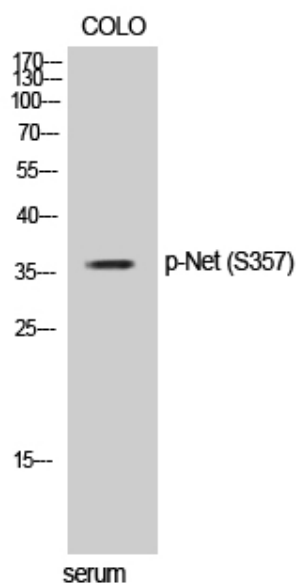
Avoid repeated freezing and thawing!

Usage suggestions

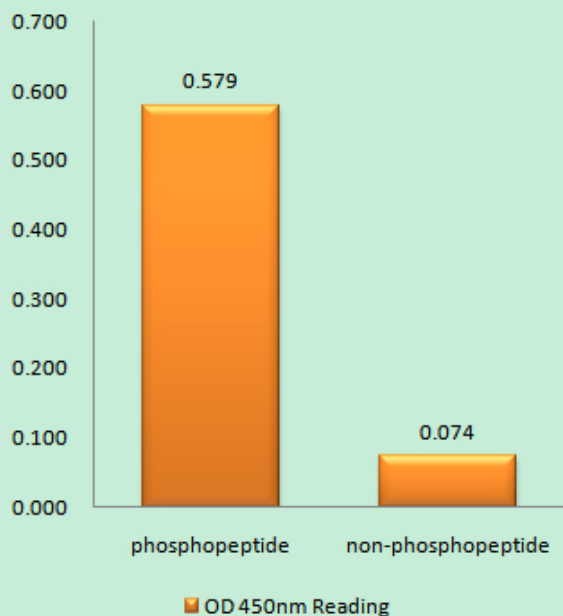
This product can be used in immunological reaction related experiments. For more information, please consult technical personnel.



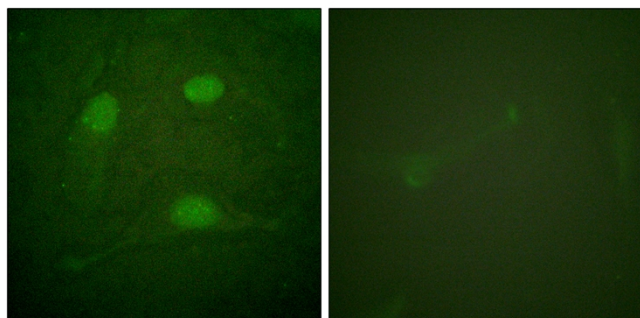
Products Images



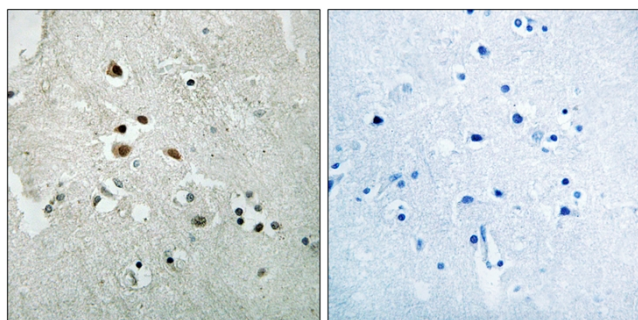
Western Blot analysis of COLO cells using Phospho-Net (S357) Polyclonal Antibody



Enzyme-Linked Immunosorbent Assay (Phospho-ELISA) for Immunogen Phosphopeptide (Phospho-left) and Non-Phosphopeptide (Phospho-right), using Elk3 (Phospho-Ser357) Antibody

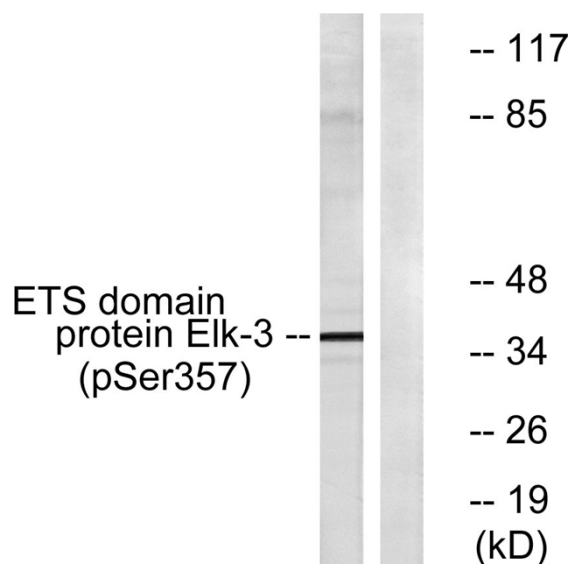


Immunofluorescence analysis of HeLa cells, using Elk3 (Phospho-Ser357) Antibody. The picture on the right is blocked with the phospho peptide.



Immunohistochemistry analysis of paraffin-embedded human brain, using Elk3 (Phospho-Ser357) Antibody. The picture on the right is blocked with the phosphopeptide.

COLO COLO



Western blot analysis of lysates from COLO205 cells treated with serum 20% 15', using Elk3 (Phospho-Ser357) Antibody. The lane on the right is blocked with the phosphopeptide.